

KARALTA ROAD RESIDENTIAL DEVELOPMENT

MAY 2020



LOCATION MAP

Drawing Schedule

Name	Drawing Number	Revision
Cover Sheet	L000	B
Tree Management Plan	L101	B
Existing Tree Schedules	L102	A
Landscape Masterplan	L201	B
Detail Landscape Plan	L202	A
Landscape Section	L301	A
Precedent Images	L401	A
Indicative Plant Schedule	L501	A

Statutory & Regulatory Guidelines

- Central Coast Council
- Gosford Local Environment Plan (GLEP) 2014
 - Gosford Development Control Plan (GDGP) (2013)
 - NSW Apartment Design Guide: 4O - Landscape Design & 4P - Planting on Structures

Site Calculations

Item	Area	Percentage
Total Site	1.07 Ha	
Total Soft Landscaping	3254m²	33%
Deep Soil Planting Zones	2080m²	21%

DESIGN REPORT

Site Description:

The subject site is located at Lots 7 (DP1071636) & 1 (DP259824) and the street address is 89-91 Karalta Road NSW.

The existing topography of the site is steep with a cross fall from the approximate high point RL 37.70 located on the north-east corner to the approximate low point RL 22.04 located in the north-west corner of the site with a fall of approximately 15.66 metres.

A one storey brick residential dwelling occupy #89 Karalta Road and an elevated one storey brick residential block occupies #91 Karalta Road. Both of these dwellings will be demolished as part of this proposal. There are currently hard paved driveways to the front of both premises with access from Karalta Road. There are large expanses of existing mature trees across both lots, many of which are to be removed as part of this proposal. There is a 10 metre wide environmental protection zone within the set back along Karalta Road with existing mature tree species which are to be retained & protected where possible as part of this development.

Local Context/Character:

The existing street character is a mix of single & multi dwelling residential units and commercial industrial buildings.

Karalta Road has extensive vegetation within the setback of the Erina Fair shopping centre and the street character is predominantly turf verge areas and concrete footpaths to the commercial & residential lots. There are no street tree plantings and existing vegetation occurs within the front garden areas of the residential lots and are a mix of native & exotic species.

The only apparent infrastructure associated with the subject site are overhead powerlines located on both sides of Karalta Road. The subject site is located in close proximity to the Erina Fair Shopping Centre, Central Coast Adventist School, Fountain Plaza Shopping Centre and backs onto Kincumba Mountain Reserve and Colin Watters Lookout.

Proposed Development:

The proposed development will include a multi level, 131 apartment residential flat building with a central common open space area. There is two levels of basement carparking and the driveway entries to this car park are located to the south & south-east corners of the site along the proposed new road.

There are private open space, common open space and public domain areas associated with this development and are as follows:

Private Open Space:

Private open space terrace and courtyard areas have been provided for each of the units on site and are in accordance with the minimum area requirements with Council's DCP & NSW Planning & Environment; Apartment Design Guide.

- The landscape intent for these private open space terrace areas will include the following:
- Private terrace or courtyard areas for the each of the apartments that can be used for outdoor entertaining,
 - Suitable screening between courtyard areas of each unit for privacy,
 - Landscape buffer zone between the private open space terrace areas and any common open space areas for privacy
 - Raised Garden Beds/Planters for individual private terrace areas and for residents to take ownership of their own garden bed (optional). Raised garden beds to provide a physical separation between private open space terrace areas and common open space terrace areas.

The private open space areas for the apartment/unit complexes will include raised planters on structure. All raised planters to include minimum suitable soil media in relation to trees, shrubs & groundcovers to promote optimum plant growth and in accordance with NSW Planning & Environment; Apartment Design Guide; Part 4P, Planting on Structures.

Common Open Space Areas:

The common open space area of this development will be located on the ground floor on podium (above basement car parks) level for communal use by all residents of this residential flat building development.

- The landscape intent for the common space terrace areas will include the following:
- Shade/amenity tree planting in deep soil zones (where practical)
 - Open lawn areas
 - Passive recreation areas such as break-out spaces, small paved courtyards for activities such as meditation, functions and communal barbeques etc.
 - External structures & furniture elements that include fixed pergola structures and park seats
 - Common open space areas to be located in areas that provide suitable solar access
 - Raised garden beds and buffer planting to provide a physical separation between private open space terrace areas and common open space terrace areas.

Common open space areas located on podium level to include raised planters on structure. All raised planters to include minimum suitable soil media in relation to trees, shrubs & groundcovers to promote optimum plant growth and in accordance with NSW Planning & Environment; Apartment Design Guide; Part 4P, Planting on Structures.

Public Domain Areas:

Public domain works with this residential flat building development will include street improvement works to Karalta Road & new works to the proposed Road.

These public domain improvement & new works will include the following:

- New insitu concrete footpaths to Council standards
- New street tree planting and tree pits to Council standards
- New turf verge to Council standards

Species selection and location of all verge plantings will be in respect to existing/proposed services and infrastructure, on street car parking and car door openings.

Planting Design Strategy:

The planting design strategy for this residential flat building development to include the following:

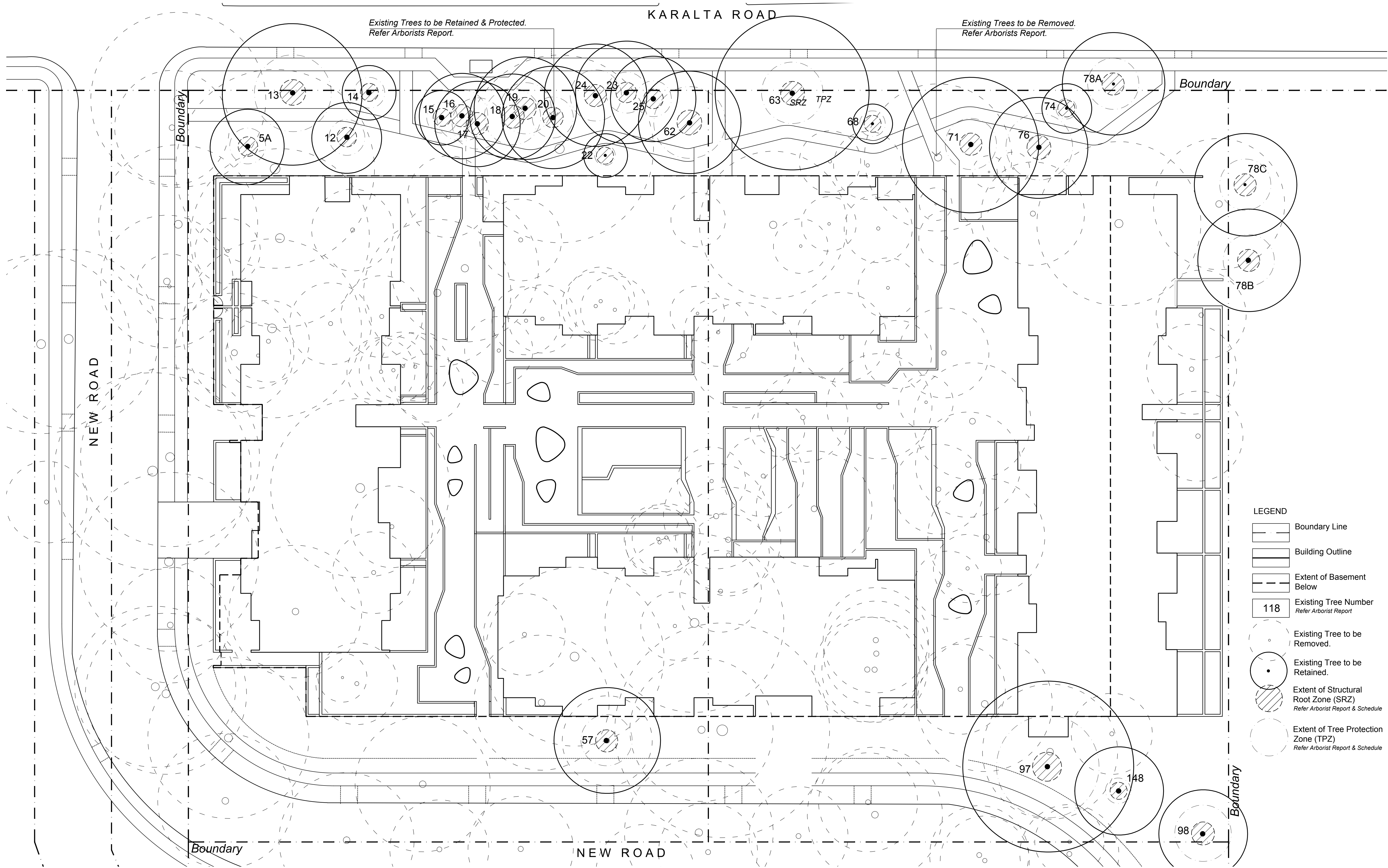
- Tree planting within appropriate deep soil zones to reduce bulk & scale of the development
- Evergreen tree planting to provide shade & amenity
- Deciduous tree planting to allow for solar access & seasonal change
- A broad planting palette to include a variety native species & exotic species to provide colour, texture, aroma & form
- Implementation of some indigenous species to encourage canopy corridor links and bio-diversity
- Where small courtyard areas are not adequate or accessible for a mower, low spreading groundcovers are to be planted as a substitute for turf and to reduce ongoing landscape maintenance.

With the proposed landscape design for this development we would implement the following safety planting initiatives:

- Avoid planting tree species that are prone to potential limb drop
- Avoid planting species close to paths and hard paved areas that are known for excessive flower and foliage drop that may cause potential slip hazards
- Avoid planting species that are known for invasive root structure that may cause damage to existing infrastructure and damage paths & hard paved areas, which may cause potential trip hazards
- Avoid planting species that are known to be toxic or may cause respiratory, allergy and/or skin irritations

Shrub species, sizing & locations are to ensure that passive surveillance is maintained at building, carpark & driveway entries path and all plantings are to be layered to with smaller groundcovers and shrubs adjacent to paths and buildings in accordance with Crime Prevention Through Environmental Design (CPTED) principles.

All proposed plant species selection has been considered in terms of soil types, species hardiness and on-going watering maintenance requirements. Predominantly low water use species (both native & exotic) have been grouped in regard to watering requirements and to reduce reliance on use of potable water.



xeriscapes

1/28 Adelaide Street East Gosford NSW 2250
115 King Street Newcastle NSW 2300
P: 02 4302 0477 • ABN 12 129 231 269

PROJECT

KARALTA ROAD RESIDENTIAL DEVELOPMENT
89-91 KARALTA ROAD ERINA NSW 2250

DRAWING NAME

TREE MANAGEMENT PLAN

CLIENT PINNACLE

PROJECT NO 20009

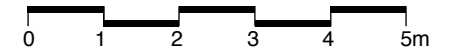
DRAWING NO L101

SCALE 1:200 @ A3




1:100 @ A1

REVISION B




DATE 04.05.20



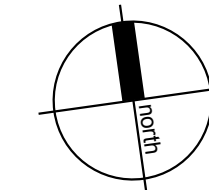
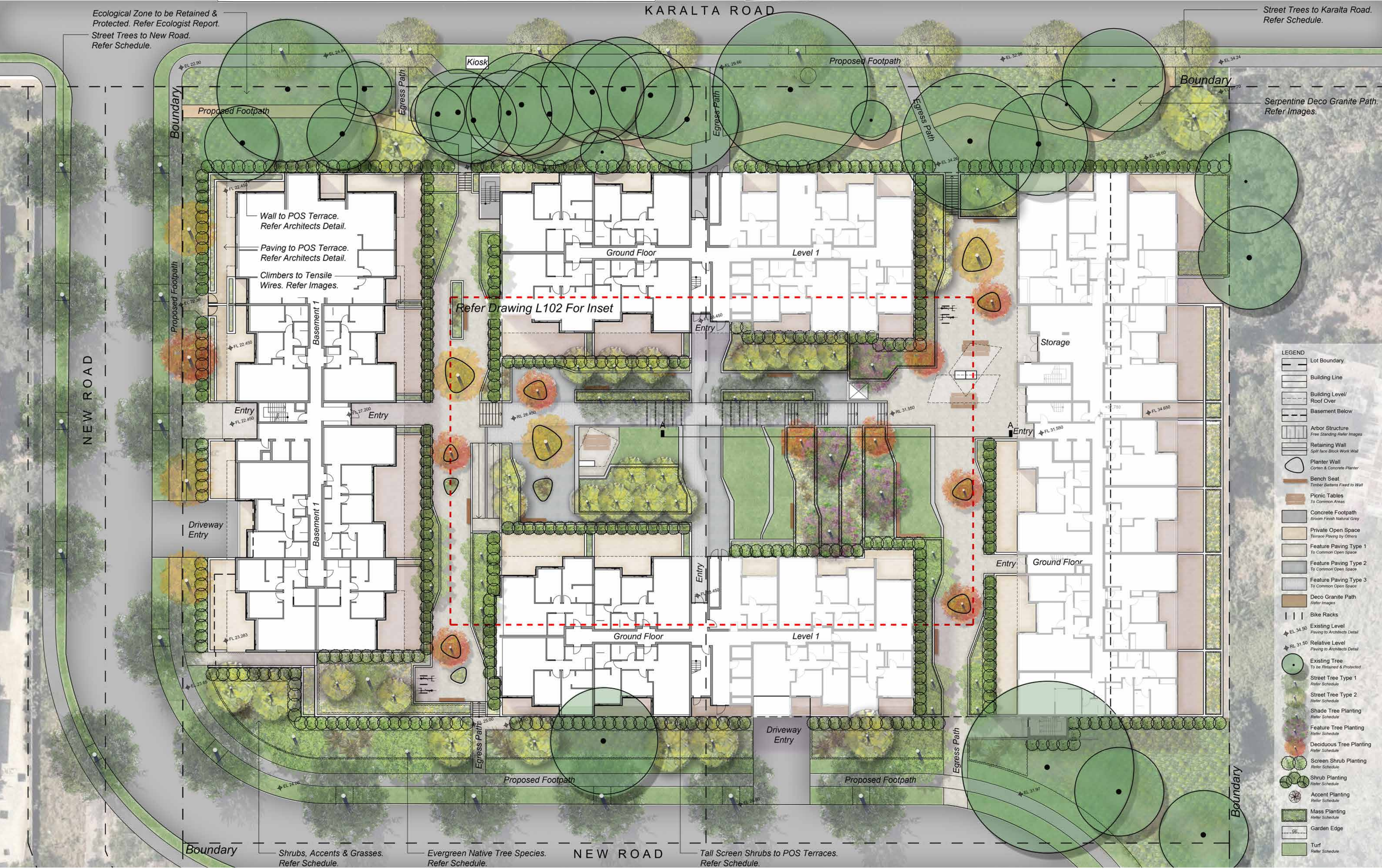
TREE MANAGEMENT SCHEDULE- KARALTA ROAD							
Tree #	Species (Botanical Name)	Common Name	Retain/ Remove	Height & Canopy Spread(m)	TPZ (r)(m)	SRZ (r)(m)	Comments/ Condition
1	<i>Eucalyptus sp</i>	Eucalyptus	Remove	32 x 10	7.2	2.8	Within new road development zone
2	<i>Eucalyptus acmeniodes</i>	White Mahogany	Remove	28 x 10	6.6	2.7	Within new road development zone
3	<i>Eucalyptus acmeniodes</i>	White Mahogany	Remove	20 x 12	7.2	2.8	Within new road development zone
4	<i>Eucalyptus acmeniodes</i>	White Mahogany	Remove	20 x 12	6	2.6	Within new road development zone
4A	<i>Eucalyptus sp</i>	Eucalyptus	Remove	20 x 14	4.8	2.4	Dead, dying, diseased or declining
5	<i>Angophora costata</i>	Smoothed Bark Apple	Remove	15 x 8	4.2	2.3	Requires minimal remedial care
5A	<i>Angophora costata</i>	Smoothed Bark Apple	Retain	10 x 10	4.2	2.3	
6	<i>Eucalyptus acmeniodes</i>	White Mahogany	Remove	28 x 15	9	3	Unsustainable encroachment from development
7	<i>Eucalyptus resinifera</i>	Red Mahogany	Remove	30 x 15	7.2	2.8	Within new road development zone
7A	<i>Glochidion ferdinandi</i>	Cheese Tree	Remove	10 x 10	4.2	2.3	Within new road development zone
8	<i>Eucalyptus acmeniodes</i>	White Mahogany	Remove	28 x 18	8.4	2.9	Within development zone
9	<i>Angophora costata</i>	Smoothed Bark Apple	Remove	14 x 8	3.6	2.1	Within development zone
10	<i>Eucalyptus acmeniodes</i>	White Mahogany	Remove	28 x 20	9.6	3.1	Within development zone
11	<i>Angophora costata</i>	Smoothed Bark Apple	Remove	28 x 10	7.2	2.8	Within development zone
12	<i>Angophora costata</i>	Smoothed Bark Apple	Retain	18 x 8	4.2	2.3	
13	<i>Eucalyptus acmeniodes</i>	White Mahogany	Retain	28 x 20	9	3	
14	<i>Cupressus sp</i>	Cypress	Retain	10 x 5	2.4	2	
15	<i>Araucaria columnaris</i>	Cook Pine	Retain	12 x 6	3.6	2.1	
16	<i>Eucalyptus resinifera</i>	Red Mahogany	Retain	18 x 10	6	2.6	
17	<i>Eucalyptus resinifera</i>	Red Mahogany	Retain	18 x 10	6	2.6	
18	<i>Eucalyptus acmeniodes</i>	White Mahogany	Retain	15 x 10	6.6	2.7	
19	<i>Eucalyptus sp</i>	Eucalyptus	Retain	20 x 12	6	2.6	
20	<i>Eucalyptus sp</i>	Eucalyptus	Retain	15 x 12	4.8	2.4	
21	<i>Eucalyptus pilularis</i>	Blackbutt	Remove	34 x 25	13.2	3.5	Unsustainable encroachment from development
22	<i>Araucaria columnaris</i>	Cook Pine	Retain	8 x 5	2.4	2	
23	<i>Angophora costata</i>	Smoothed Bark Apple	Retain	25 x 12	4.8	2.4	
24	<i>Angophora costata</i>	Smoothed Bark Apple	Retain	18 x 12	6	2.6	
25	<i>Eucalyptus pilularis</i>	Blackbutt	Retain	20 x 10	4.2	2.3	
26	<i>Angophora costata</i>	Smoothed Bark Apple	Remove	28 x 12	7.2	2.8	Within development zone
27	<i>Angophora costata</i>	Smoothed Bark Apple	Remove	30 x 10	6.6	2.7	Within development zone
28	<i>Angophora costata</i>	Smoothed Bark Apple	Remove	28 x 15	7.2	2.8	Within development zone
29	<i>Angophora costata</i>	Smoothed Bark Apple	Remove	30 x 15	7.8	2.8	Within development zone
30	<i>Angophora costata</i>	Smoothed Bark Apple	Remove	12 x 4	2.4	2	Within development zone
31	<i>Eucalyptus sp</i>	Eucalyptus	Remove	20 x 8	10.8	3.2	Within development zone
32	<i>Cupressus sp</i>	Cypress	Remove	12 x 5	2.4	2	Within development zone
33	<i>Angophora costata</i>	Smoothed Bark Apple	Remove	25 x 12	7.2	2.8	Within development zone
34	<i>Eucalyptus sp</i>	Eucalyptus	Remove	20 x 15	9.6	3.1	Within development zone
35	<i>Liquidamber styrachiflua</i>	Sweet Gum	Remove	15 x 10	3.6	2.1	Within development zone
36	<i>Liquidamber styrachiflua</i>	Sweet Gum	Remove	15 x 10	3.6	2.1	Within development zone
37	<i>Angophora costata</i>	Smoothed Bark Apple	Remove	25 x 14	7.2	2.8	Within development zone
37A	<i>Syagrus romanzoffiana</i>	Cocos Palm	Remove	NA	NA	NA	Group of 10 Exempt from Protection
38	<i>Livistona australis</i>	Cabbage Tree Palm	Remove	5 x 4	5	2	Within development zone
39	<i>Unidentified</i>	NA	Remove	8 x 8	3	2	Within development zone
40	<i>Eucalyptus sp</i>	Eucalyptus	Remove	25 x 20	9.6	3.1	Within development zone
40A	<i>Archontophoenix cunninghamiana</i>	Bangalow Palm	Remove	8 x 5	6	2	Group of 7 within development zone
41	<i>Phoenix canariensis</i>	Canary Island Date Palm	Remove	8 x 6	7	2	Within development zone
42	<i>Eucalyptus sp</i>	Eucalyptus	Remove	25 x 15	9	3	Within development zone
43	<i>Eucalyptus sp</i>	Eucalyptus	Remove	25 x 20	9.6	3.1	Within development zone
44	<i>Eucalyptus sp</i>	Eucalyptus	Remove	20 x 10	12	3.4	Within development zone
45	<i>Eucalyptus sp</i>	Eucalyptus	Remove	20 x 10	5.4	2.5	Within development zone
46	<i>Eucalyptus resinifera</i>	Red Mahogany	Remove	25 x 15	7.2	2.8	Within development zone
47	<i>Cupressus sp</i>	Cypress	Remove	10 x 8	3.6	2.1	Within development zone
48	<i>Cupressus sp</i>	Cypress	Remove	10 x 8	3.6	2.1	Unsustainable encroachment from development
49	<i>Angophora costata</i>	Smoothed Bark Apple	Remove	30 x 20	9.6	3.1	Within new road development zone

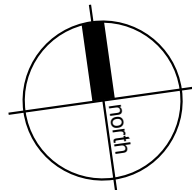
 Denotes Existing Tree to be Retained
 Denotes Existing Tree to be Removed
 Denotes Existing Tree not within Site Boundary

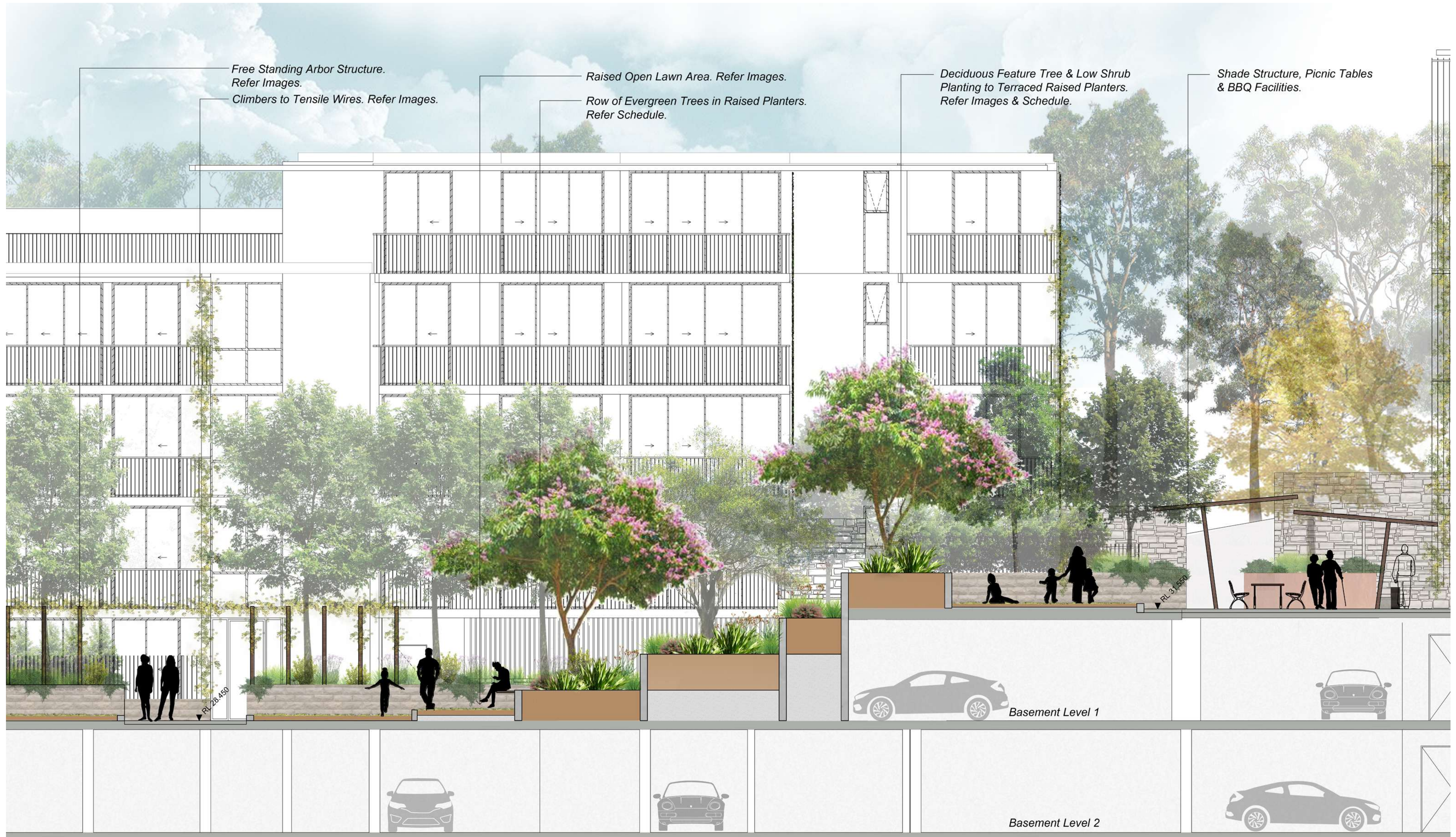
TREE MANAGEMENT SCHEDULE- KARALTA ROAD CONT.							
Tree #	Species (Botanical Name)	Common Name	Retain/ Remove	Height & Canopy Spread(m)	TPZ (r)(m)	SRZ (r)(m)	Comments/ Condition
50	<i>Corymbia gummifera</i>	Red Bloodwood	Remove	25 x 8	4.8	2.4	Within new road development zone
51	<i>Eucalyptus pilularis</i>	Blackbutt	Remove	30 x 20	11.4	3.3	Within new road development zone
52	<i>Eucalyptus sp</i>	Eucalyptus	Remove	15 x 6	3.6	2.1	Within new road development zone
53	<i>Eucalyptus sp</i>	Eucalyptus	Remove	25 x 10	4.8	2.4	Within new road development zone
54	<i>Eucalyptus sp</i>	Eucalyptus	Remove	18 x 6	4.8	2.4	Within new road development zone
55	<i>Eucalyptus sp</i>	Eucalyptus	Remove	20 x 10	5.4	2.5	Termite & within new road development zone
55A	<i>Syagrus romanzoffiana</i>	Cocos Palm	Remove	10 x 5	NA	NA	Group of 7 within new road development zone
56	<i>Eucalyptus sp</i>	Eucalyptus	Remove	30 x 20	7.2	2.8	Within new road development zone
57	<i>Angophora costata</i>	Smoothed Bark Apple	Retain	25 x 12	6	2.6	Minor Encroachment from proposed development
58	<i>Eucalyptus sp</i>	Eucalyptus	Remove	30 x 12	7.2	2.8	Within new road development zone
59	<i>Eucalyptus sp</i>	Eucalyptus	Remove	25 x 10	6.6	2.7	Unsustainable encroachment from development
60	<i>Angophora costata</i>	Smoothed Bark Apple	Remove	20 x 10	4.2	2.3	Within development zone
61	<i>Angophora costata</i>	Smoothed Bark Apple	Remove	30 x 15	7.2	2.8	Within development zone
61A	<i>Livistona australis</i>	Cabbage Tree Palm	Remove	10 x 5	6	2	Within development zone
61B	<i>Archontophoenix cunninghamiana</i>	Bangalow Palm	Remove	8 x 4	5	2	Group of palm trees
61C	<i>Archontophoenix cunninghamiana</i>	Bangalow Palm	Remove	8 x 4	5	2	Group of palm trees
61D	<i>Livistona australis</i>	Cabbage Tree Palm	Remove	6 x 5	6	2	Within development zone
62	<i>Eucalyptus sp</i>	Eucalyptus	Retain	18 x 15	8.4	2.9	
63	<i>Eucalyptus sp</i>	Eucalyptus	Retain	20 x 18	7.2	2.8	
64	<i>Eucalyptus sp</i>	Eucalyptus	Remove	20 x 20	15	3.7	Within development zone
65	<i>Eucalyptus sp</i>	Eucalyptus	Remove	20 x 10	6	2.6	Within development zone
66	<i>Angophora costata</i>	Smoothed Bark Apple	Remove	20 x 12	7.2	2.8	Unsustainable encroachment from development
67	<i>Eucalyptus pilularis</i>	Blackbutt	Remove	25 x 20	8.4	2.9	Unsustainable encroachment from development
68	<i>Allocasuarina sp</i>	Casuarina	Retain	8 x 4	3	2	
69	<i>Eucalyptus pilularis</i>	Blackbutt	Remove	25 x 15	7.2	2.8	Within development zone
70	<i>Eucalyptus pilularis</i>	Blackbutt	Remove	30 x 20	7.2	2.8	Within development zone
71	<i>Eucalyptus pilularis</i>	Blackbutt	Retain	20 x 15	6	2.6	
72	<i>Eucalyptus pilularis</i>	Blackbutt	Remove	30 x 20	8.4	2.9	Unsustainable encroachment from development
73	<i>Angophora costata</i>	Smoothed Bark Apple	Remove	15 x 6	2.4	2	Within development zone
74	<i>Eucalyptus sp</i>	Eucalyptus	Retain	12 x 6	2.4	2	
75	<i>Eucalyptus pilularis</i>	Blackbutt	Remove	25 x 20	7.8	2.8	Within development zone
76	<i>Eucalyptus sp</i>	Eucalyptus	Retain	20 x 15	7.8	2.8	
77	<i>Eucalyptus pilularis</i>	Blackbutt	Remove	25 x 20	12	3.4	Within development zone
78	<i>Eucalyptus pilularis</i>	Blackbutt	Remove	25 x 15	7.2	2.8	Unsustainable encroachment from development
78A	<i>Eucalyptus pilularis</i>	Blackbutt	Retain	18 x 12	6	2.6	
78B	<i>Liquidamber styrachiflua</i>	Sweet Gum	Retain	18 x 12	6	2.6	
78C	<i>Cupressus sp</i>	Cypress	Retain	18 x 5	6	2.6	
79	<i>Eucalyptus pilularis</i>	Blackbutt	Remove	25 x 12	5.4	2.5	Within development zone
80	<i>Eucalyptus pilularis</i>	Blackbutt	Remove	25 x 10	4.8	2.4	Within development zone
81	<i>Eucalyptus pilularis</i>	Blackbutt	Remove	25 x 12	6	2.6	Within development zone
82	<i>Angophora costata</i>	Smoothed Bark Apple	Remove	20 x 5	3	2	Within development zone
83	<i>Eucalyptus sp</i>	Eucalyptus	Remove	20 x 15	6	2.6	Within development zone
84	<i>Angophora costata</i>	Smoothed Bark Apple	Remove	20 x 10	4.8	2.4	Within development zone
85	<i>Eucalyptus piperita</i>	Sydney Peppermint	Remove	30 x 20	10.8	3.2	Within development zone
86	<i>Eucalyptus sp</i>	Eucalyptus	Remove	18 x 10	6	2.6	Within development zone
87	<i>Eucalyptus sp</i>	Eucalyptus	Remove	20 x 15	6	2.6	Within development zone
88	<i>Corymbia gummifera</i>	Red Bloodwood	Remove	15 x 15	3	2	Within development zone
89	<i>Eucalyptus sp</i>	Eucalyptus	Remove	20 x 10	7.2	2.8	Within development zone
90	<i>Eucalyptus sp</i>	Eucalyptus	Remove	25 x 15	9.6	3.1	Within development zone
91	<i>Glochidion ferdinandi</i>	Cheese Tree	Remove	12 x 8	3.6	2.1	Within development zone
92	<i>Eucalyptus sp</i>	Eucalyptus	Remove	20 x 12	4.8	2.4	Within development zone
93	<i>Eucalyptus sp</i>	Eucalyptus	Remove	25 x 20	10.8	3.2	Within development zone
94	<i>Erythrina crista-galli</i>	Cockspur Coral Tree	Remove	8 x 8	4.8	2.4	Within development zone
95	<i>Eucalyptus sp</i>	Eucalyptus	Remove	18 x 15	11.4	3.3	Unsustainable encroachment from development
96	<i>Eucalyptus sp</i>	Eucalyptus	Remove	30 x 18	9.6	3.1	Within new road development zone
97	<i>Eucalyptus sp</i>	Eucalyptus	Retain	20 x 20	12	3.4	
98	<i>Cinnamomum camphora</i>	Camphor Laurel	Retain	12 x 12	6.6	2.7	
98A	<i>Glochidion ferdinandi</i>	Cheese Tree	Retain	10 x 8	3.6	2.1	
98B	<i>Cupressus sp</i>	Cypress	Remove	15 x 5	4.8	2.4	Within development zone
98C	<i>Cupressus sp</i>	Cypress	Remove	10 x 4	2.4	2	Within development zone
99	<i>Eucalyptus sp</i>	Eucalyptus	Remove	15 x 8	4.8	2.4	Within development zone

 Denotes Existing Tree to be Retained
 Denotes Existing Tree to be Removed
 Denotes Existing Tree not within Site Boundary

TREE MANAGEMENT SCHEDULE- KARALTA ROAD CONT.							
Tree #	Species (Botanical Name)	Common Name	Retain/ Remove	Height & Canopy Spread(m)	TPZ (r)(m)	SRZ (r)(m)	Comments/ Condition
100	<i>Eucalyptus pilularis</i>	Blackbutt	Remove	25 x 18	8.4	2.9	Within development zone
101	<i>Eucalyptus pilularis</i>	Blackbutt	Remove	25 x 12	6.6	2.7	Within development zone
102	<i>Eucalyptus sp</i>	Eucalyptus	Remove	25 x 10	4.2	2.3	Within development zone
103	<i>Corymbia gummifera</i>	Red Bloodwood	Remove	18 x 8	4.8	2.4	Within development zone
104	<i>Angophora costata</i>	Smoothed Bark Apple	Remove	18 x 8	4.2	2.3	Within development zone
105	<i>Syncarpia glomulifera</i>	Turpentine	Remove	12 x 6	2.4	2	Within development zone
106	<i>Angophora costata</i>	Smoothed Bark Apple	Remove	18 x 8	2.4	2.3	Within development zone
107	<i>Angophora costata</i>	Smoothed Bark Apple	Remove	25 x 15	4.8	2.4	Within development zone
108	<i>Eucalyptus sp</i>	Eucalyptus	Remove	25 x 12	4.8	2.4	Within development zone
109	<i>Eucalyptus sp</i>	Eucalyptus	Remove	25 x 12	9.6	3.1	Within development zone
110	<i>Eucalyptus pilularis</i>	Blackbutt	Remove	25 x 20	12	3.4	Unsustainable encroachment from development
111	<i>Eucalyptus pilularis</i>	Blackbutt	Remove	30 x 20	9	3	Within new road development zone
112	<i>Eucalyptus sp</i>	Eucalyptus	Remove	18 x 12	4.8	2.4	Within new road development zone
113	<i>Eucalyptus pilularis</i>	Blackbutt	Remove	25 x 8	4.8	2.4	Within new road development zone
113A	<i>Eucalyptus sp</i>	Eucalyptus	Remove	12 x 5	4.8	2.4	Within development zone
113B	<i>Eucalyptus sp</i>	Eucalyptus	Remove	12 x 4	8.4	2.9	Within development zone
114	<i>Eucalyptus pilularis</i>	Blackbutt	Remove	25 x 8	4.8	2.4	Within development zone
115	<i>Eucalyptus pilularis</i>	Blackbutt	Remove	20 x 8	3	2	Within development zone
116	<i>Eucalyptus sp</i>	Eucalyptus	Remove	25 x 15	7.2	2.8	Within development zone
117	<i>Corymbia gummifera</i>	Red Bloodwood	Remove	15 x 8	4.2	2.3	Within development zone
118	<i>Angophora costata</i>	Smoothed Bark Apple	Remove	18 x 12	6	2.6	Within new road development zone
119	<i>Eucalyptus pilularis</i>	Blackbutt	Remove	30 x 25	11.4	3.3	Within new road development zone
120	<i>Eucalyptus sp</i>	Eucalyptus	Remove	23 x 12	4.8	2.4	Within new road development zone
120A	<i>Allocasuarina sp</i>	Casuarina	Remove	12 x 8	3	2	Within new road development zone
121	<i>Eucalyptus piperita</i>	Sydney Peppermint	Remove	28 x 15	9	3	Within new road development zone
122	<i>Eucalyptus piperita</i>	Sydney Peppermint	Remove	20 x 12	4.8	2.4	Within new road development zone
123	<i>Eucalyptus pilularis</i>	Blackbutt	Remove	30 x 20	7.2	2.8	Within new road development zone
123A	<i>Eucalyptus piperita</i>	Sydney Peppermint	Remove	25 x 15	7.2	2.8	Within new road development zone
124	<i>Eucalyptus pilularis</i>	Blackbutt	Retain	15 x 10	4.8	2.4	Outside of site boundary
125	<i>Eucalyptus piperita</i>	Sydney Peppermint	Retain	20 x 18	10.8	3.2	Outside of site boundary
126	<i>Eucalyptus piperita</i>	Sydney Peppermint	Retain	28 x 18	10.2	3.2	Outside of site boundary
126A	<i>Eucalyptus piperita</i>	Sydney Peppermint	Retain	28 x 18	8.4	2.9	Outside of site boundary
126B	<i>Eucalyptus piperita</i>	Sydney Peppermint	Retain	25 x 18	7.2	2.8	Outside of site boundary
126C	<i>Cupressus sp</i>	Cypress	Retain	18 x 5	4.2	2.3	Outside of site boundary
127	<i>Eucalyptus piperita</i>	Sydney Peppermint	Retain	30 x 20	8.4	2.9	Outside of site boundary
E127	<i>Syncarpia glomulifera</i>	Turpentine	Retain	15 x 10	8.4	2.9	Outside of site boundary
128	<i>Eucalyptus piperita</i>	Sydney Peppermint	Retain	30 x 18	7.8	2.8	Outside of site boundary
128A	<i>Eucalyptus piperita</i>	Sydney Peppermint	Retain	30 x 12	7.2	2.8	Outside of site boundary
128B	<i>Eucalyptus sp</i>	Eucalyptus	Remove	22 x 12	4.8	2.4	Within new road development zone







xeriscapes

1/28 Adelaide Street East Gosford NSW 2250
115 King Street Newcastle NSW 2300
P: 02 4302 0477 • ABN 12 129 231 269

PROJECT

KARALTA ROAD RESIDENTIAL DEVELOPMENT
89-91 KARALTA ROAD ERINA NSW 2250

DRAWING NAME

LANDSCAPE SECTION

CLIENT PINNACLE

PROJECT NO 20009

DRAWING NO L301

SCALE 1:100 @ A3

1:50 @ A1

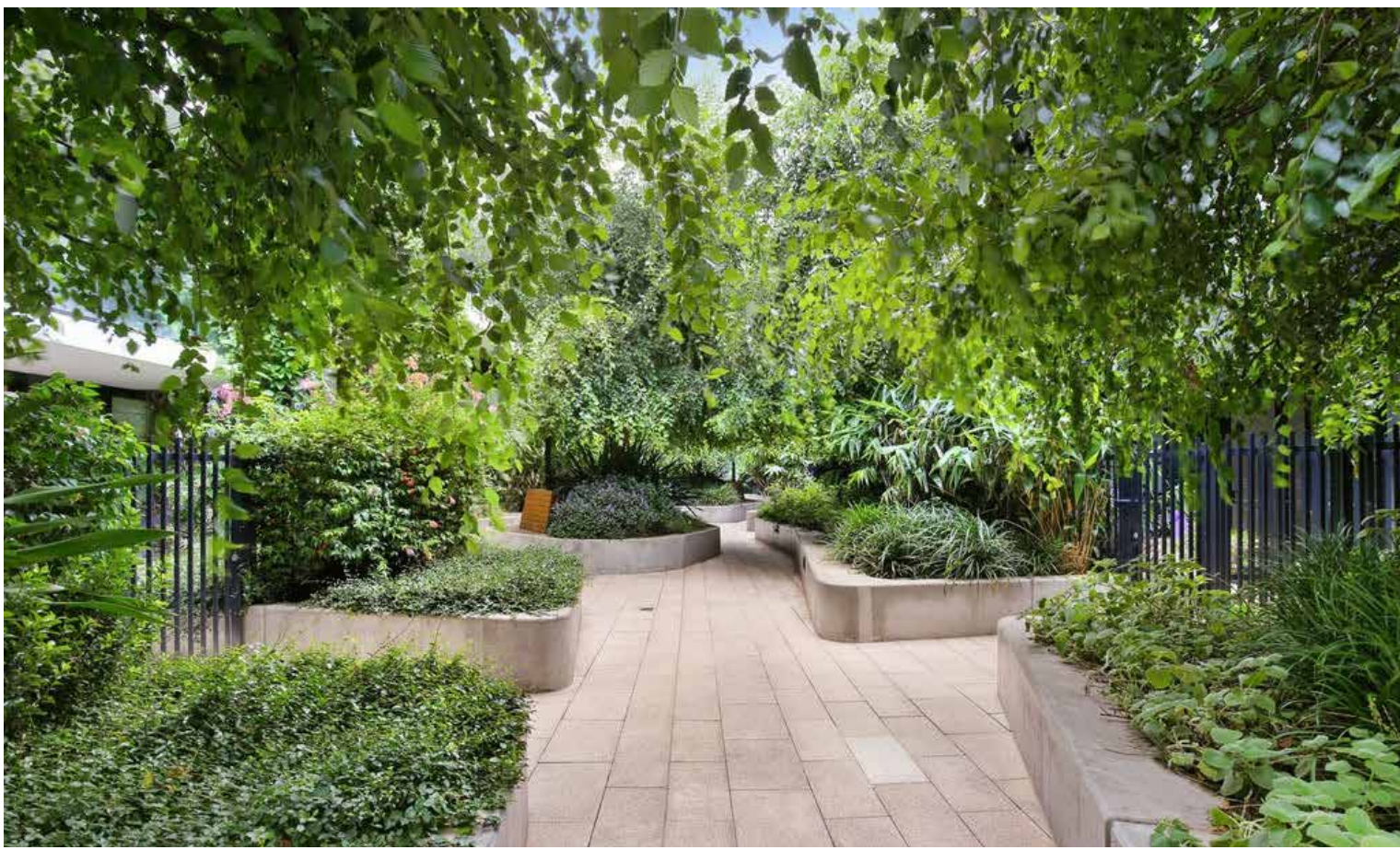
0 0.2 0.5 1.0 1.5 2.5m

REVISION A

DATE 04.05.20



CLIMBERS TO TENSILE WIRES



CASCADING PLANTS



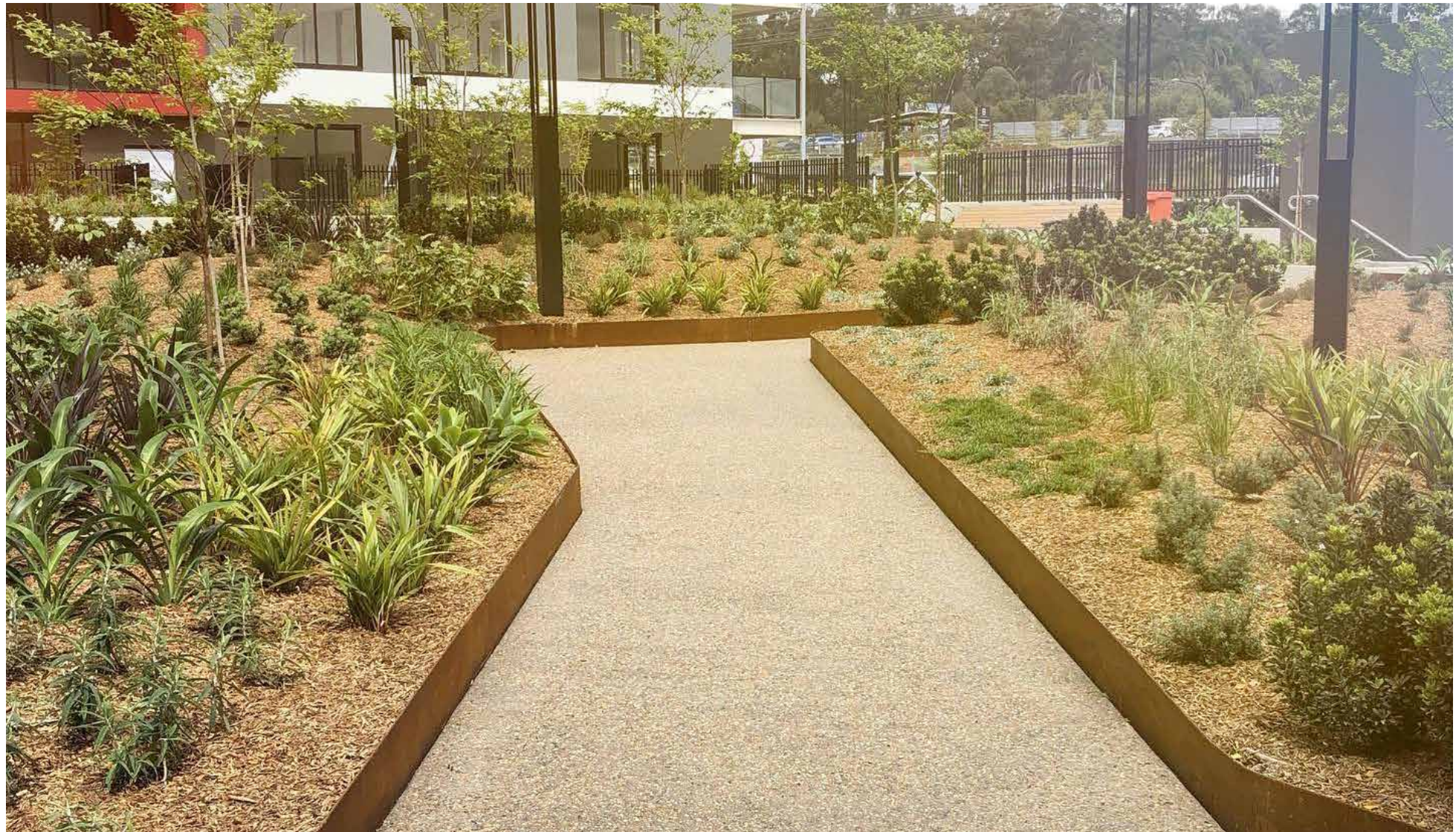
SHADE STRUCTURES



CORTEN STEEL PLANTERS



MOUNDED PLANTING



FEATURE PAVING



TERRACED LAWN



ARBOR

xeriscapes

1/28 Adelaide Street East Gosford NSW 2250
115 King Street Newcastle NSW 2300
P: 02 4302 0477 • ABN 12 129 231 269

PROJECT

KARALTA ROAD RESIDENTIAL DEVELOPMENT
89-91 KARALTA ROAD ERINA NSW 2250

DRAWING NAME

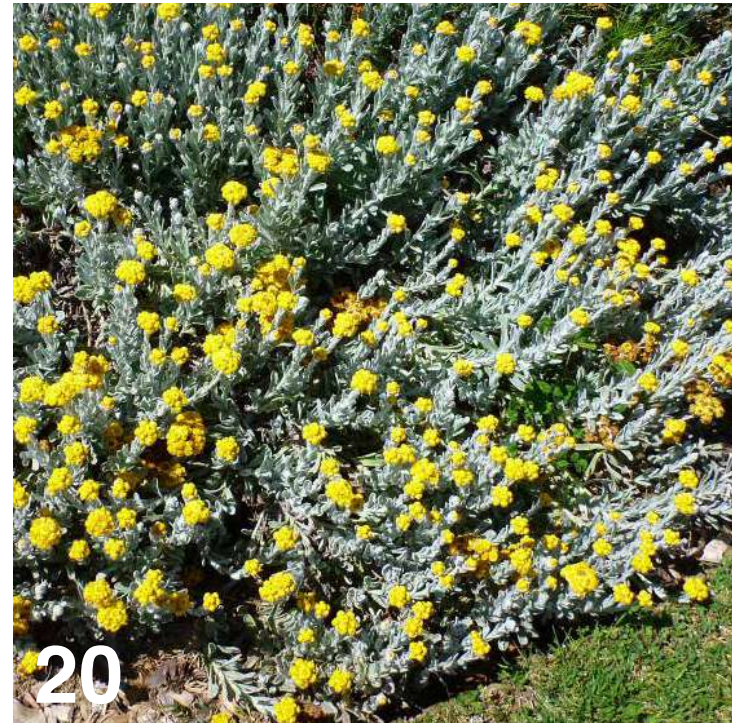
PRECEDENT IMAGES

CLIENT PINNACLE
PROJECT NO 20009
DRAWING NO L401
SCALE NA

REVISION A
DATE 04.05.20

Image	Botanical Name	Common Name	Mature Height (m.)	Mature Spread (m.)	Pot Size	Comments	Soil Types *
Street Trees - Karalta Road							
01	<i>Buckinghamia celsissima</i>	Ivory Curl Flower	6	4	75L	Stakes and ties	S C L
Street Trees - Proposed Road							
02	<i>Lophostemon confertus</i>	Brush Box	15	8	75L	Stakes and ties	S C L
	<i>Syncarpia glomulifera</i>	Turpentine	10	15	75L	Stakes and ties	S L
Shade Amenity Trees							
03	<i>Banksia serrata</i>	Old Man Banksia	10	8	75L	Stakes and ties	S
	<i>Elaeocarpus reticulatus</i>	Blueberry Ash	10	5-8	75L	Stakes and ties	S C L
	<i>Waterhousia floribunda</i> 'Sweeper'	Weeping Lilly Pilly	10	7	75L	Stakes and ties	S C L
Small Feature Trees							
04	<i>Acacia baileyana</i>	Cootamundra Wattle	8	5	45L	Stakes and ties	S C L
05	<i>Corymbia ficifolia</i> 'Orange Splendour'	Dwarf Flowering Gum	6	4-6	45L	Stakes and ties	S L
06	<i>Geihera parviflora</i>	Wilga	5-9	6-9	45L	Stakes and ties	S
	<i>Tristaniopsis 'Luscious'</i>	Luscious Water Gum	8	5	45L	Stakes and ties	S L
Deciduous Trees							
07	<i>Lagerstroemia indica</i> x <i>L. fauriei</i>	Crepe Myrtle	5	3-4	75L	Stakes and ties	S C L
Tall Screen Shrubs > 1.5m							
08	<i>Banksia robur</i>	Swamp Banksia	2	2	300mm		S C L
09	<i>Grevillea 'Honey Gem'</i>	Spider Flower Grevillea	4	3	300mm		S C L
	<i>Leucospermum cordifolium</i>	Scarlet Ribbon	2	1.5	300mm		L S
	<i>Syzygium australe</i> 'Straight & Narrow'	Narrow Lilly Pilly	5-8	1-1.5	300mm		S C L
11	<i>Viburnum odoratissimum</i>	Dense Fence	2.5	2	300mm		S C L
Shrubs < 1.5m							
	<i>Callistemon 'Better John'</i>	Better John Bottlebrush	1.2	0.9	200mm		S C L
	<i>Echium fastuosum</i>	Echium	1.5	1.5	200mm		
	<i>Grevillea 'Crimson Villa'</i>	Crimson Villa	0.7	0.7	200mm		S C L
12	<i>Raphiolepis indica</i> 'Apple Blossom'	Apple Blossom Hawthorn	1	1	200mm		S C L
13	<i>Westringia fruticosa</i> 'Zena'	Westringia 'Zena'	1.2	1.2	200mm		S C L
Mass Planted Groundcovers							
14	<i>Alternanthera dentata</i> 'Little Ruby'	Littly Ruby	0.5	0.5	140mm		
	<i>Banksia spinulosa</i> 'Birthday Candles'	Birthday Candles Banksia	0.5	1	200mm		
	<i>Convolvulus cneorum</i>	Silver Bush	0.5	1	140mm		
15	<i>Dianella caerulea</i> 'Cassa Blue'	Cassa Blue Flax Lily	0.5	0.4	140mm		
	<i>Dichondra repens</i>	Kidney Weed	0.1	1.5	140mm		
	<i>Liriope muscari</i> 'Isabella'	Isabella Fine Leaf Liriope	0.4	0.5	140mm		
17	<i>Myoporum parvifolium</i> 'Yareena'	Yareena Creeping Boobialla	0.1	1	140mm		
	<i>Neomarica gracilis</i>	Walking Iris	0.5	0.5	140mm		
	<i>Poa labillardieri</i> 'Kingsdale'	Blue Tussock Grass	0.45	0.45	140mm		
18	<i>Stachys byzantina</i>	Lambs Ears	0.5	0.5	140mm		
	<i>Viola hederacea</i>	Native Violet	0.1	0.3	140mm		
	<i>Westringia 'Mundi'</i>	Westringia 'Mundi'	0.6	1.5	140mm		
Low Border Planting							
19	<i>Carex comans</i> 'Frosted Curls'	New Zealand Hair Sedge	0.6	0.6	140mm		
20	<i>Chrysocephalum apiculatum</i> 'Desert Flame'	Yellow Buttons	0.5	0.3	140mm		
21	<i>Lomandra 'Lime Tuff'</i>	Lime Tuff Lomandra	0.5	0.6	140mm		
Cascading Planting							
22	<i>Casuarina glauca</i> 'Cousin It'	Cousin It	0.3	1	140mm		
	<i>Hardenbergia violacea</i> 'Meema'	Meema Snake Vine	0.5	2	140mm		
	<i>Rosmarinus officinalis</i> 'Blue Lagoon'	Blue Lagoon Rosemary	0.3	1	140mm		
Shade Tolerant Planting							
23	<i>Asplenium australasicum</i>	Birds Nest Fern	1	1	140mm		
24	<i>Blechnum nudum</i>	Fishbone Water Fern	0.7	0.5	140mm		
	<i>Macrozamia communis</i>	Burrawang	1	1.5	140mm		
	<i>Philodendron 'Xanadu'</i>	Xanadu Dwarf Philodendron	0.8	0.8	140mm		
	<i>Pteris tremula</i>	Tender Brake	1	0.8	140mm		
Climbers							
25	<i>Cissus antartica</i>	Kangaroo Vine	6		140mm		
	<i>Pandorea jasminoides</i>	Bower of Beauty	5		140mm		
	<i>Pyrostegia venusta</i>	Orange Trumpet Vine	10		140mm		
	<i>Thunbergia grandiflora</i>	Bengal Clockvine	10		140mm		

***Soil Types**
(S) Sandy, (C) Clay, (L) Loamy Soils



xeriscapes

1/28 Adelaide Street East Gosford NSW 2250
115 King Street Newcastle NSW 2300
P: 02 4302 0477 • ABN 12 129 231 269

PROJECT

KARALTA ROAD RESIDENTIAL DEVELOPMENT
89-91 KARALTA ROAD ERINA NSW 2250

DRAWING NAME

INDICATIVE PLANT SCHEDULE

CLIENT PINNACLE
PROJECT NO 20009
DRAWING NO L501
SCALE NA

REVISION A
DATE 04.05.20